

## Overview

From the inception of time till date, man has always been in active search of better and more improved way of doing things. Technological advancements have been astronomical especially in the 21<sup>st</sup> century. There is no doubt that we have become a global village.

Educational institution is one of the foremost institutions known to man. The existence of a formal educational structure has become a global phenomenon. It is practically impossible to come across a cultural or habitual setting without a form of school. Over the years, Schools have become the physical and logical structure through which education is parsed from teachers to learners. Different hierarchies of schools exist, with each targeting a particular age-group or social-status.

The daily running of a school is a herculean task; because many activities take place synchronously, most times it is difficult to get real-time insight to the critical metrics and indices regarding school operations. It is a known fact that the success of any institution lies majorly in the management practices adopted by that institution.

*Overtime, by virtue of experience, we have come to realize that data forms the life-blood of any organization; quick and real-time access to accurate information most often than none, is the essential variable for success especially as it pertains to operational efficiency.*

In a classic school management practice, different users need to access and process different data at different or same time. For instance: the Bursar needs to compute payment records. Form teachers need to manage classes, attendance, collate results, compute performance etc. Subject-Teachers need to grade students on their subject across different classes. Parents/Guardians need to monitor their wards, make payments, and attend PTA meetings as well lodge complaints, etc. Admin-Officers need to manage employment, employees, payroll, deductions, appraisals etc. The list is endless.

*Our proposed solution will provide a centralized platform which will completely automate all core activities and processes involved in the daily running of your School. It is simply a case of providing a technology solution for better management of your school's operations.*

## Manual School Management versus Automated School Management

There are numerous disadvantages when operating any system or institution manually. Over time, the manual process has proven mundane to most institution. Many sectors in Nigeria are beginning to embrace the electronic and software culture owing to its numerous benefits.

*"In 85% of Schooloperating manually, the overall operational and process efficiency is always below average - largely due to errors, time-wastage, erratic data and poor decision-support"  
[Study from Nucleus Research]*

## Functional Available Modules

Schoolphix® ESMIS is built around functions. A group of related functions are collectively grouped to form a module. The core functional modules in Schoolphix® are enumerated below:

- ✓ Student Management Module: Student Enrolment Management, Profile Management, Compliance Management (Fees, Rules, etc.), Academic & Behavior Tracking/Logs, Student Transfer Management.
- ✓ Academic Management Module: Student Grading and Promotion, Class Result and Subject Result Computation, e-Report Card Preparation, Student Promotions Management, Academic Workflow Management, Subject Attendance Tracking, Subject-to-Teacher Mapping & Management, E-Learning Template Module.
- ✓ Students Module: Academic Records Archive, Subject Assessment & Result Check, e-Library, Collaboration & Social Networking, E-Learning Activities: Assignment, Quiz, Test, Exam, Payment History & Receipts.
- ✓ Parents Module: Online Fees Payment and e-Receipt, Payment Tracking and Payment History, Student Academic Performance Tracking, Student Monitoring, PTA Activities, Notifications, Complaints, Feedback & Inquiry, Students Report Card Via SMS.
- ✓ Admin Module & Global Configuration: Academic Session Setup and Management, Fees Setup and Fee-Item Management, Class Setup, Grade System Definition and Promotion Threshold Management, Time Table Management, School Calendar and Events Management, Employee Management & HR Activities, Management Reports.
- ✓ Bursars Module: Fee Payment Tracking, Management and Reporting, Income and Expenditure Management, School Accounts Management, Assets and Liability Management, Equity Management, Staff Salary computation, benefits, deductions etc. General Ledger, P&L, Income Statement, Balance Sheet, Cash flow Analysis & Fixed Asset Report.
- ✓ Enterprise Reports Module: Student Reports, Employee Reports, Fees Payment Reports, Accounting and Financial Reports, Academic Reports, PTA Records and Logs, Master Data Reports, System Audit Trail
- ✓ Social Networking Module: Real-time Chat, Student-to-Student, Student-to-Teacher, Teacher-to-Teacher and Parent-to-Teacher Collaboration, Message Boards, Micro-Blogs & Forums.
- ✓ Messaging Module: Email Templates and Notification; SMS Templates & Notification.
- ✓ e-Library Module: Catalogues and Shelves Management, e-Books.
- ✓ Utilities: Year Book Preparation, Sick-Bay Management, Extra-Curricular Activities, Sports House, Clubs etc. Document Management & File Tracking, Hostel Management, School bus Management.
- ✓ E-Learning Platform: E-learning Template Management, Online Assignments, Quiz, Test, Exam.
- ✓ Crèche and Nursery Live Streaming: Remote Parental View, Local Monitoring.
- ✓ Biometric Monitoring: Staff Entry Timing, Student Entry Timing, Paid Student Filtering.
- ✓ Identity Card Generation: Bulk ID Generation Template Configuration.

## Solution Benefits

Flexible, Robust and Easy to Use, Online Fees Payment & Real-time Payment Tracking, Reduce Computation Time & Academic Errors, Numerous Reports for Administrative Purpose, Superior System Integration and Technology Convergence, Low TCO and Increased ROI, Decision Support and Management Reports, Audit Trails, Encryption and Hashing of Data, Automated Data Backup Services, Professional Maintenance & Support Service.

## Summary of Features:

- **Automation Platform**
  - ✚ Operations Management Automation
  - ✚ Automated Result and Grading Computation
  - ✚ Automated Report Card Generation & Export
  - ✚ Automated Fee-Payment-Defaulters Identification
  - ✚ e-Administration Platform
  - ✚ Single-Click Traceability Matrix
  
- **Online Self-Service Platform**
  - ✚ Flexible Fees setup and Management
  - ✚ Online Fees Payment
  - ✚ Real-time Payment Verification
  - ✚ E-Receipt and Invoicing
  - ✚ Web-Access
  
- **Enterprise Reports Engine**
  - ✚ Summary and Detailed Reports based on user-defined parameters
  - ✚ On-click, On-demand and Quick-time Reports
  - ✚ Multiple Report Export options (Excel, PDF, Word, HTML, XML etc.)
  - ✚ Rich Enterprise Report Archive
  
- **Collaboration & Social Networking**
  - ✚ Real-time Notification via Email & SMS
  - ✚ Enterprise Multi-user collaboration suite
  
- **Security & Social Networking**
  - ✚ SSL Grade Information & Data Security
  - ✚ Role Based Access Control
  - ✚ Automated Session Management and Control
  
- **Platform Independence**
  - ✚ Operating System independent
  - ✚ Mobile Device Compatibility and Portability
  - ✚ Cross-Browser Stability
  
- **Usability & Scalability**
  - ✚ Ease of Use
  - ✚ Very Flexible and Robust
  - ✚ Highly Scalable

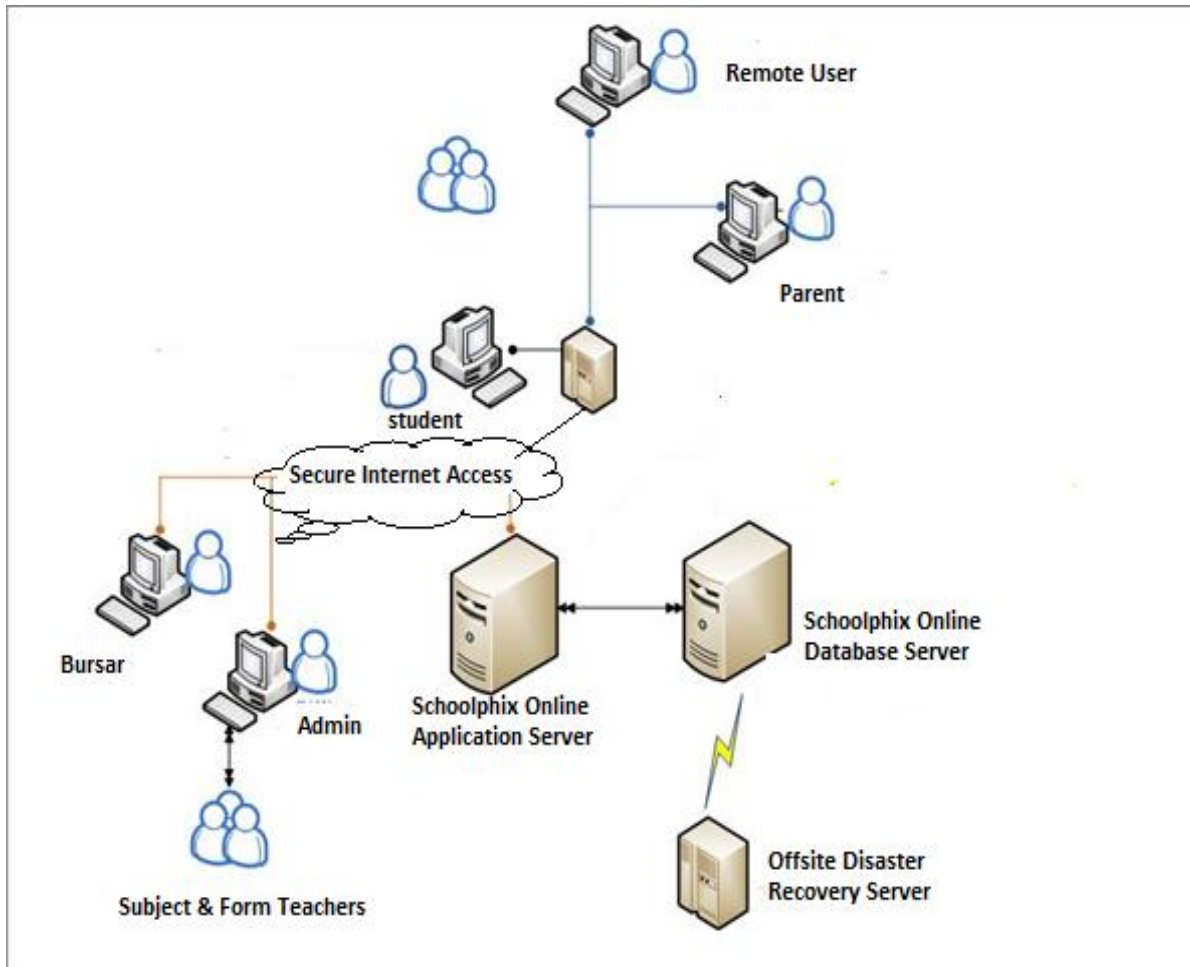
### Our Solution:

*"Our solution is designed, built, deployed and maintained with industry best practices. We can confidently guarantee the workability, maintainability and success of our solution deployment."*

### Addressing your Needs:

*"Our Agile development methodology and Solution Support Strategy ensures and guarantees that our solutions are robust, flexible, stable and meets your unique demands and needs – this is one of our distinguishing features as an organization".*

## Deployment Architecture



## Conclusion

We are fully committed to the success of this deployment! We look forward to the perfection and consolidation of an understanding that will define the terms of a contract!

## Contact US

If you have any questions about this proposal, please contact:

|   |  |
|---|--|
| Head of Solutions   |  |
| Mr. Christian Ofoefule  |  |
| Phixsoft Global Enterprises Limited                                   |  |
| Web: <a href="http://www.phixsoft.com.ng">www.phixsoft.com.ng</a>     |  |
| Phone: +234 704 639 2032, +234 803 630 2551                           |  |
| Email: <a href="mailto:info@phixsoft.com.ng">info@phixsoft.com.ng</a> |  |